

# COVID-19: Going Forward

- September 3, 2020



Stay Informed Via These Resources:  
[gov.bc.ca/Covid-19](https://gov.bc.ca/Covid-19) | [bccdc.ca](https://bccdc.ca) | 1-888-COVID19

Symptom Self-Assessment:  
[covid19.thrive.health](https://covid19.thrive.health)



BRITISH  
COLUMBIA

# Weekly Profile of COVID-19 Cases



**5,372** Total Cases

**547** New Last Week →



**50** % Female Sex

**41** Median Age



**588** Ever Hospitalized

**21** New Last Week ↑



**11** % Cases Hospitalized

**69** Median Age



**204** Deaths

**4** New Last Week →



**4** % Cases Died

**85** Median Age



**4,253** Removed From Isolation

**408** New Last Week



**79** % Cases Removed

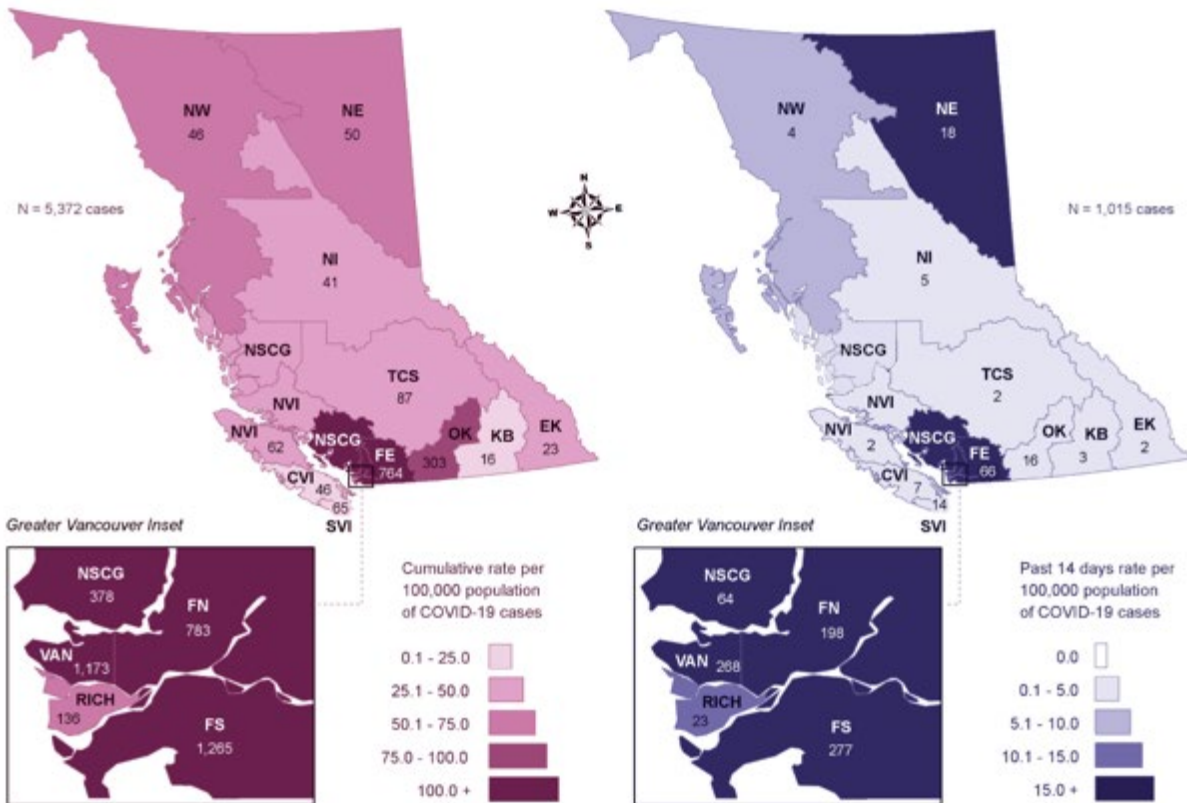
**906** Active Cases

*Note: Weekly comparison represents provincial data from August 21-27, 2020 compared to August 14-20, 2020.*

# Geographic Distribution of COVID-19 by Health Service Delivery Area of Case Residence

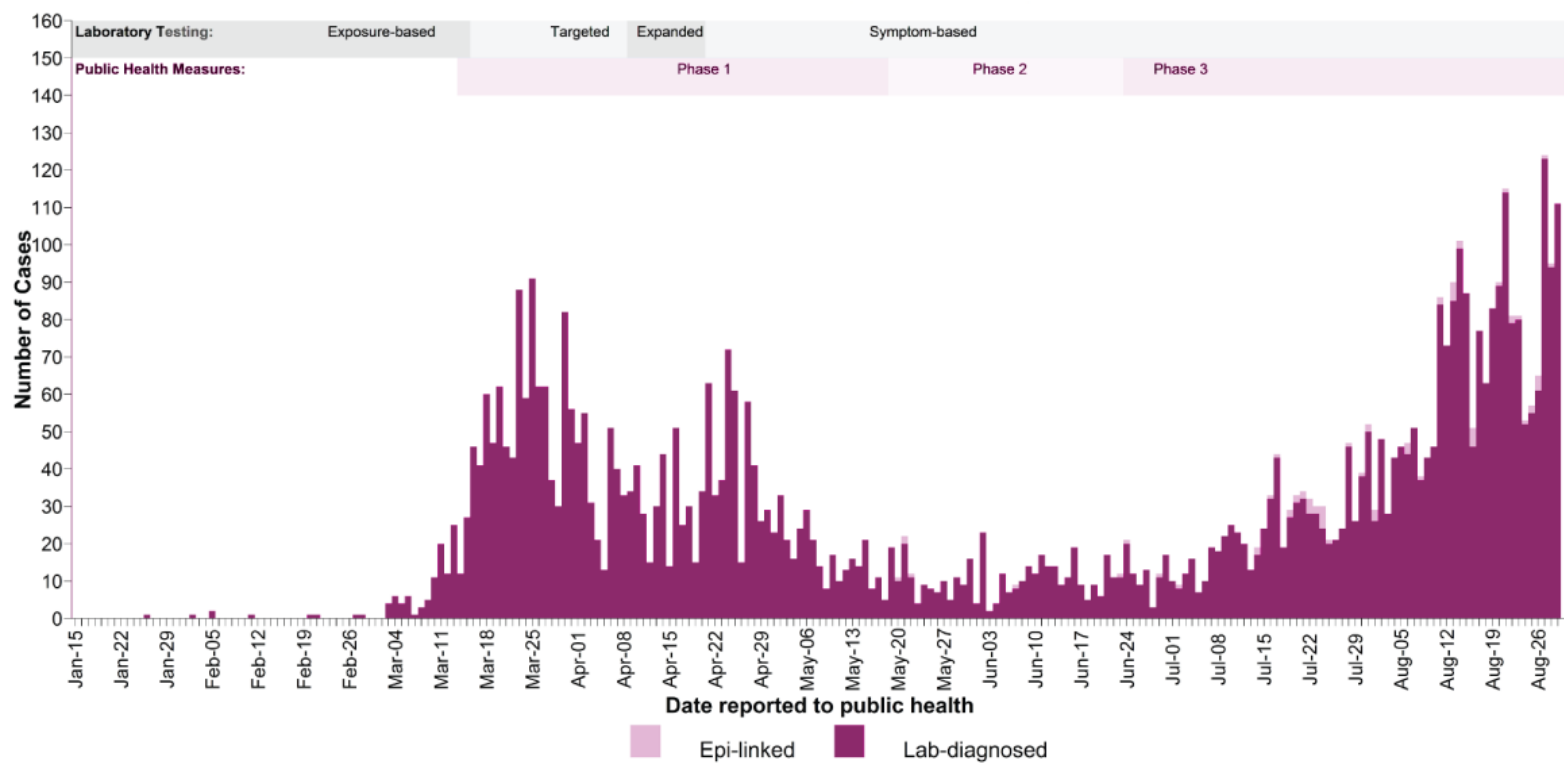
Cumulative total: cases reported Jan 1 to Aug 27, 2020

Past 14 days: cases reported Aug 14 to 27, 2020

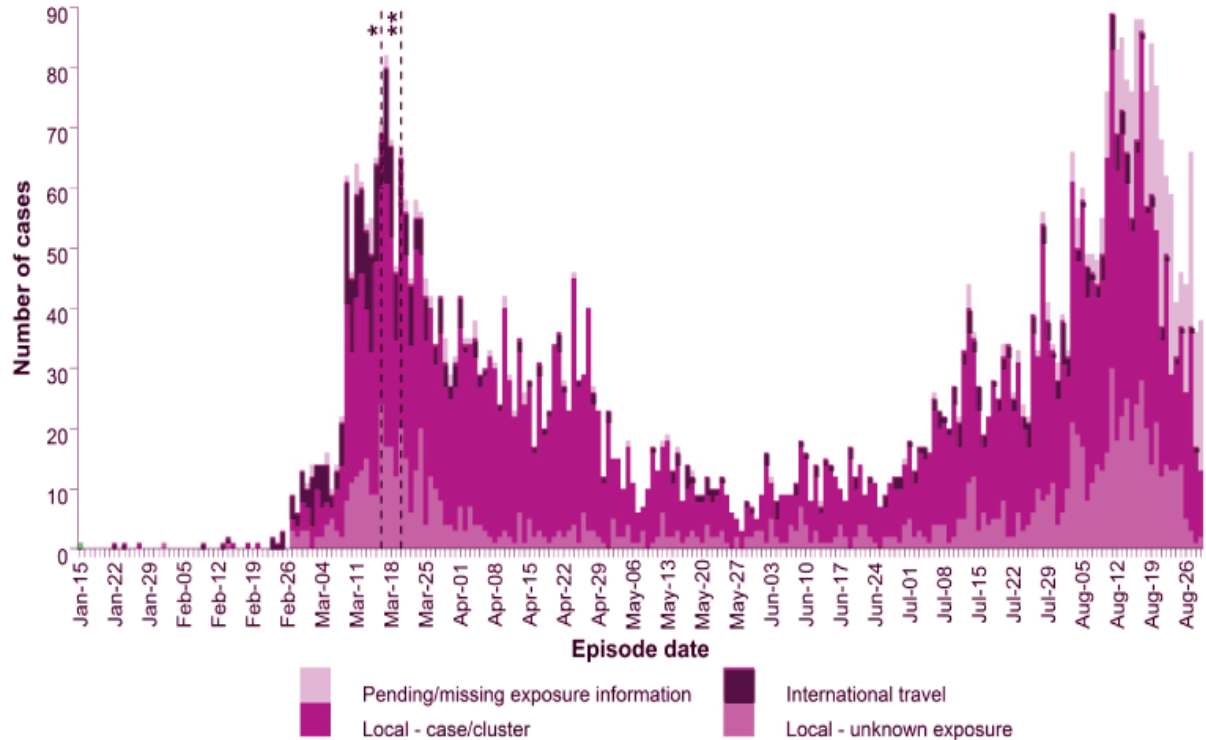


Notes: Cases are mapped by location of residence; cases with unknown residence and from out of province are not mapped. Data source: COVID-19 case line lists reported by the regional health authorities of British Columbia. How to interpret the maps: The map on the left (blue) illustrates the geographic distribution of all reported cases from January 1, 2020 onwards. The map on the right (brown) illustrates the reported cases during the past 14 days. Health Service Delivery Areas (HSDA) with higher rates are illustrated in darker colour shading. The number of reported cases appears under each HSDA label. Note that not all COVID-19 infected individuals are tested and reported; the virus may be circulating undetected in the community, including in areas where no cases have been identified by public health. Map created August 27, 2020 by BCCDC.

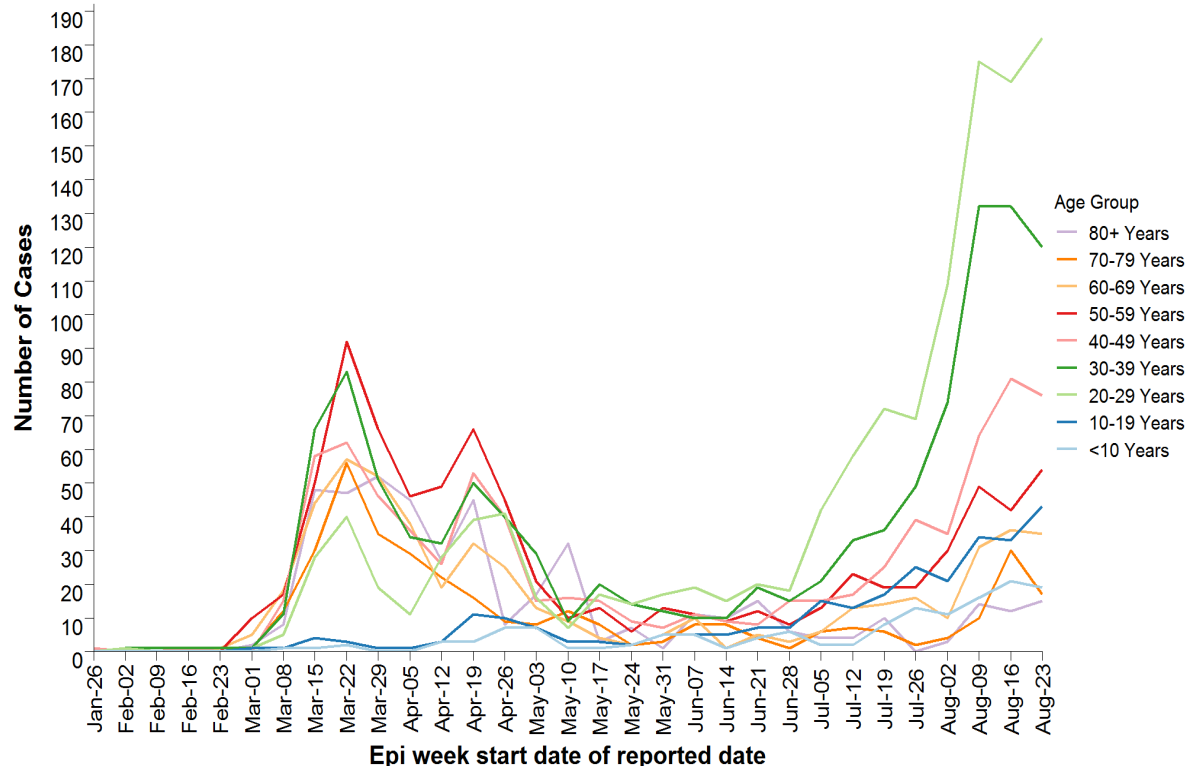
# Epidemic curve, COVID-19 cases in B.C. by reported date January 15 – August 29, 2020 (N=5,691)



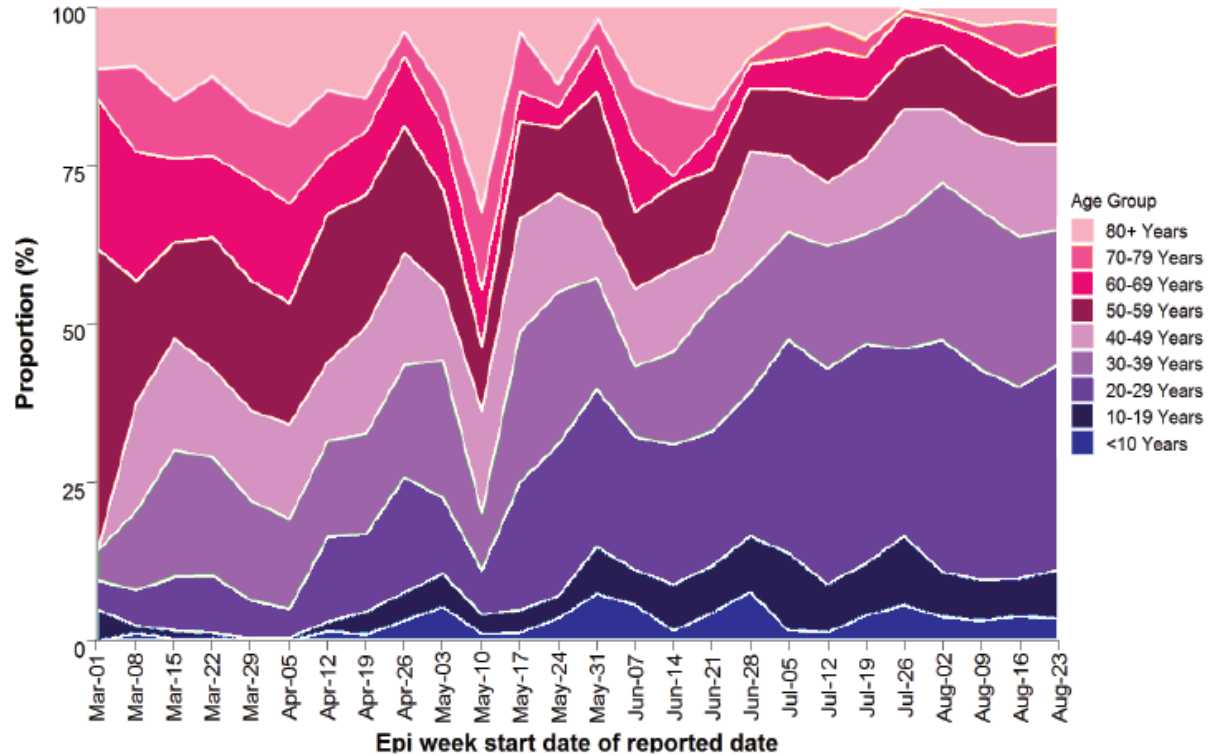
# Likely source of infection for COVID-19 cases in B.C. by episode date, January 15 – August 29, 2020 (N=5,693)



# Counts of COVID-19 cases by ten year age groups and epidemiological week of report, B.C., January 19 – August 29, 2020 (N=5,645\*)

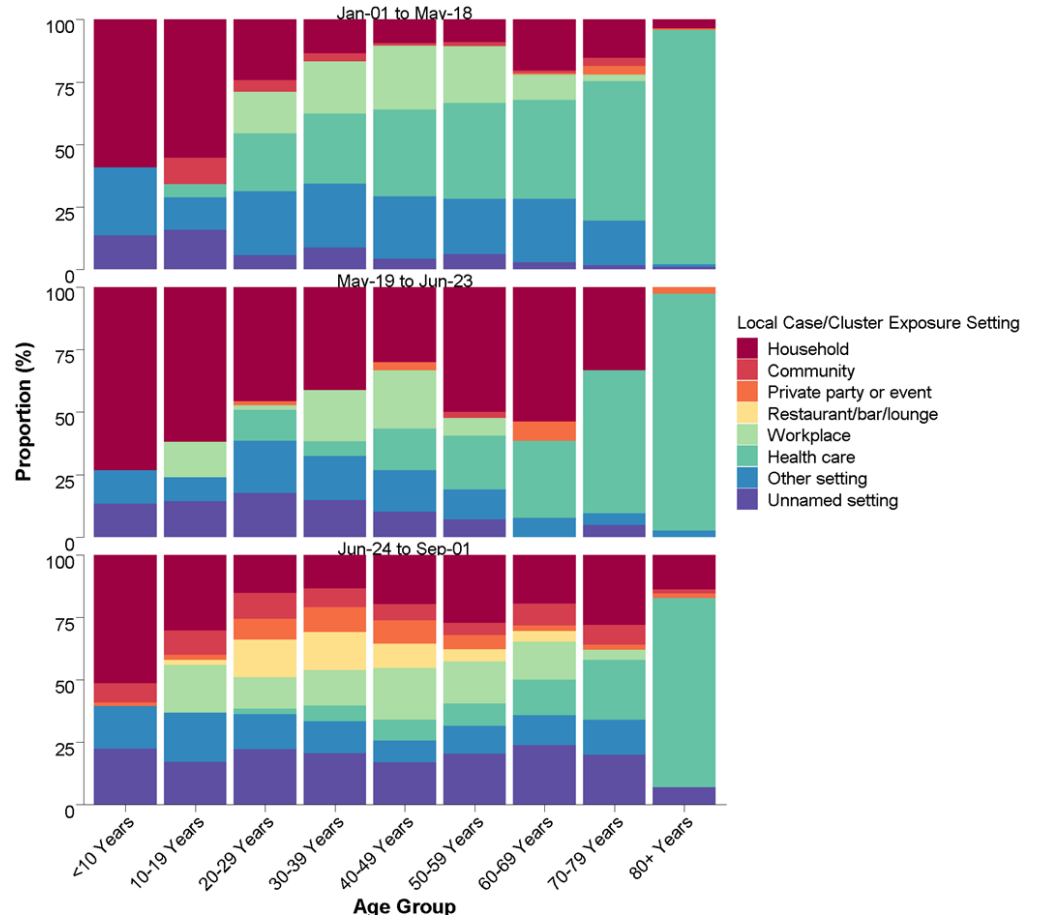


# Proportion of COVID-19 cases by ten year age groups and epidemiological week of report, B.C., January 19 – August 29, 2020 (N=5,645\*)



# Proportion of cases by exposure setting and age per epidemic phase, B.C., Jan.1 – Sept.1, 2020 (N=3,616\*)

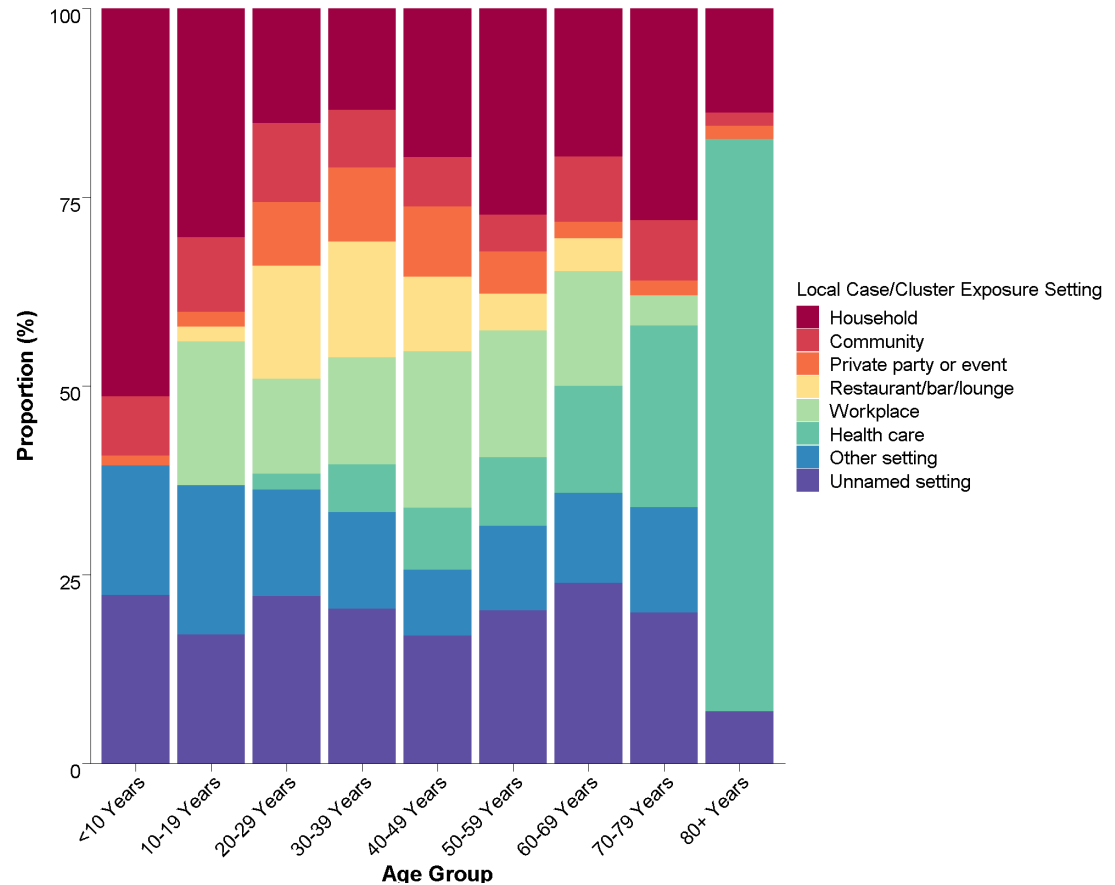
\* Case counts by epidemic phase: Phase 1 Jan. 1-May 18 - 1,651; Phase 2 May 19-Jun. 23 - 272; Phase 3 Jun. 24-Sep. 1 - 1,693





# Proportion of cases by exposure or age during Phase 3, B.C., June 24 – Sept.1, 2020 (N=1,693\*)

\* Case counts by age group: <10 - 76; 10-19 - 152; 20-29 - 573; 30-39 - 366; 40-49 - 183; 50-59 - 143; 60-69 - 92; 70-79 - 50; 80+ - 58

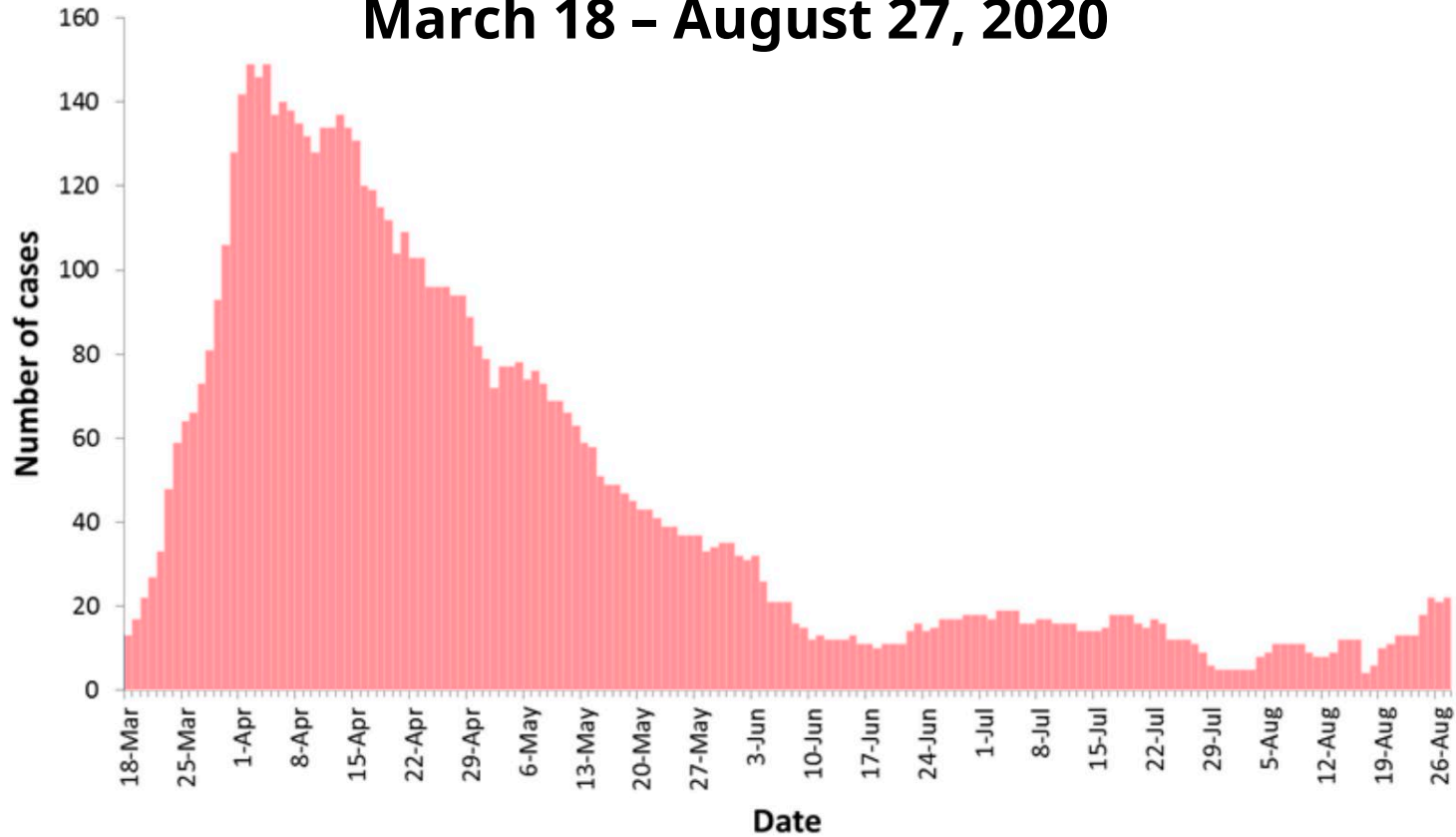


# Number and incidence rates of COVID-19 cases by health authority, B.C., August 23-29, 2020 (N=586)

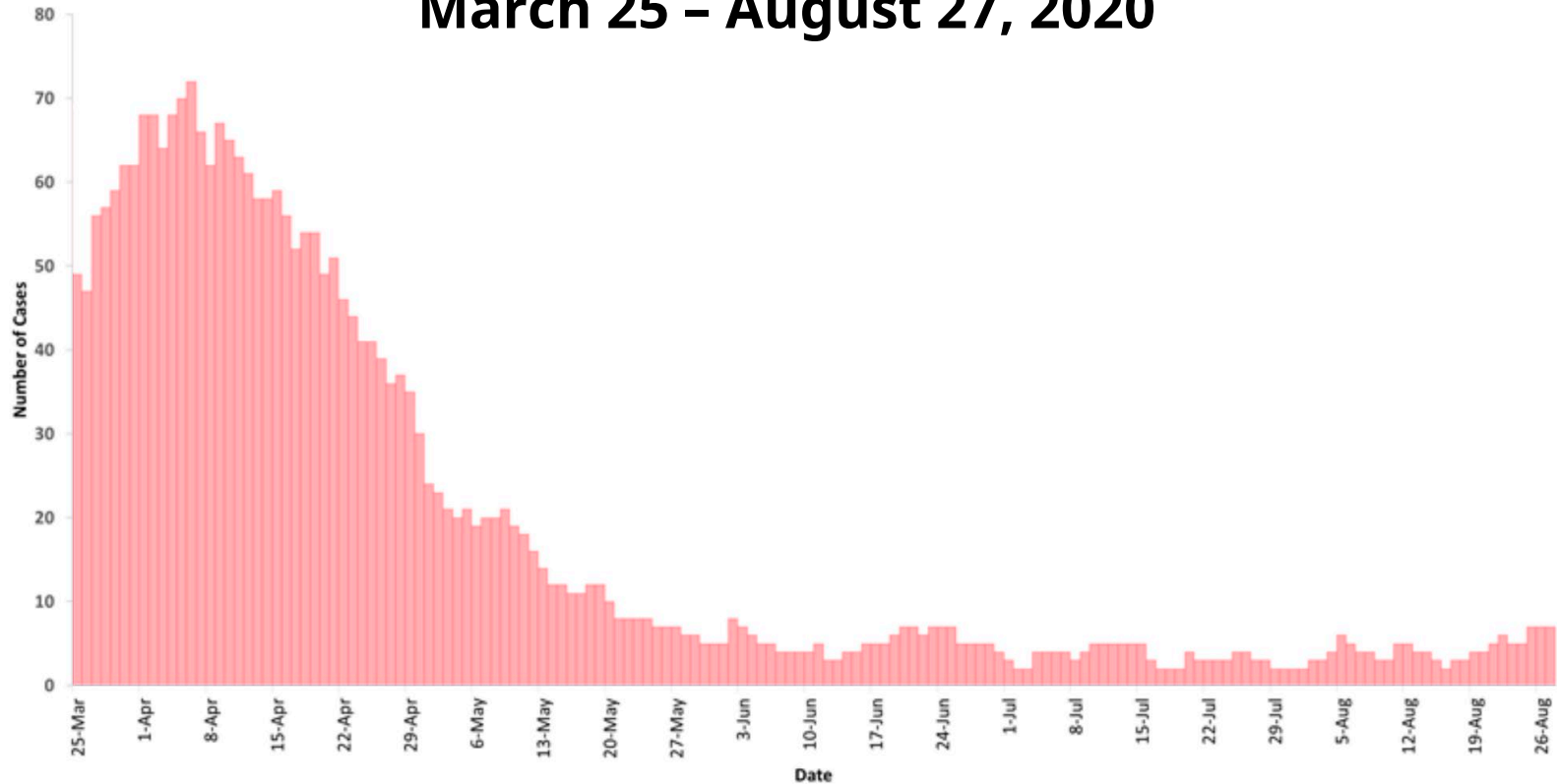
	Fraser	Interior	Vancouver Island	Northern	Vancouver Coastal	Out of Canada	Total BC *
Number of Cases between August 23-29	302	15	11	24	231	3	586
Incidence rate per 100,000 population per week	15.7	1.9	1.3	8.0	18.6	n/a	11.4

*\* The total BC incidence excludes the out of Canada residents.*

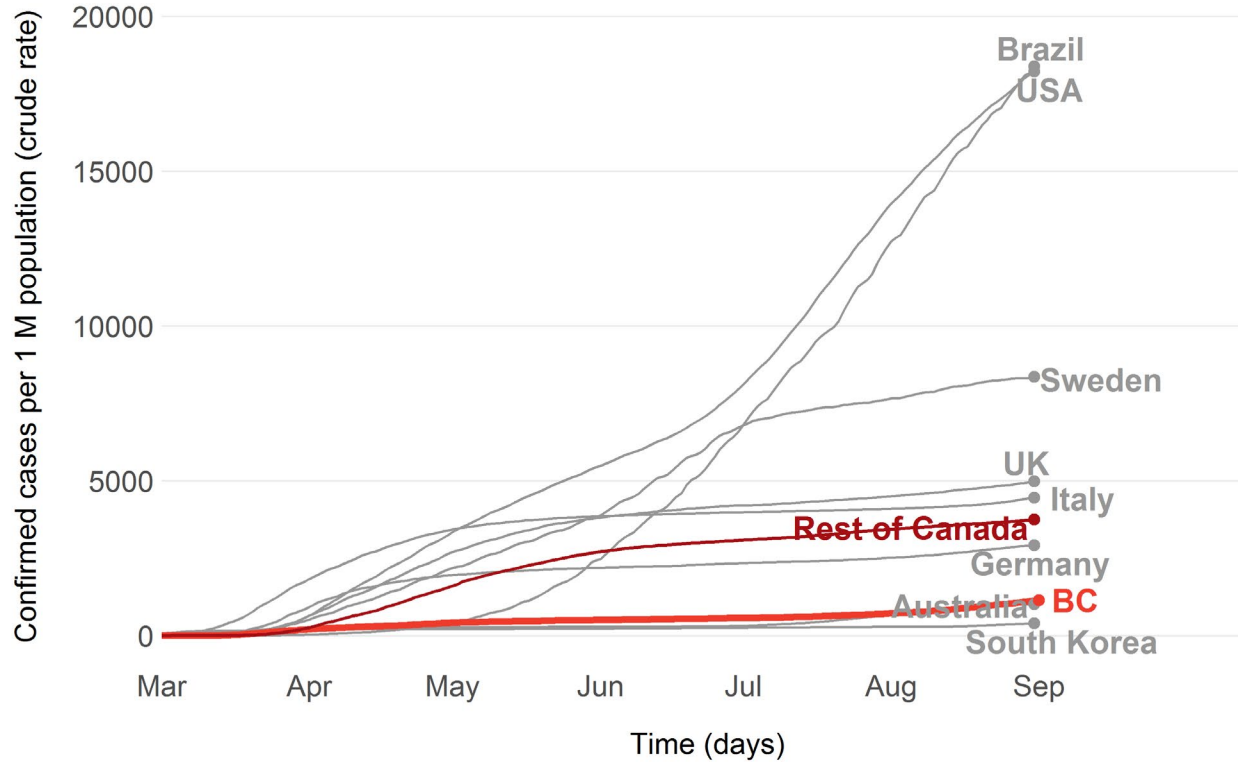
# Number of COVID-19 cases in hospital by day, B.C., March 18 - August 27, 2020



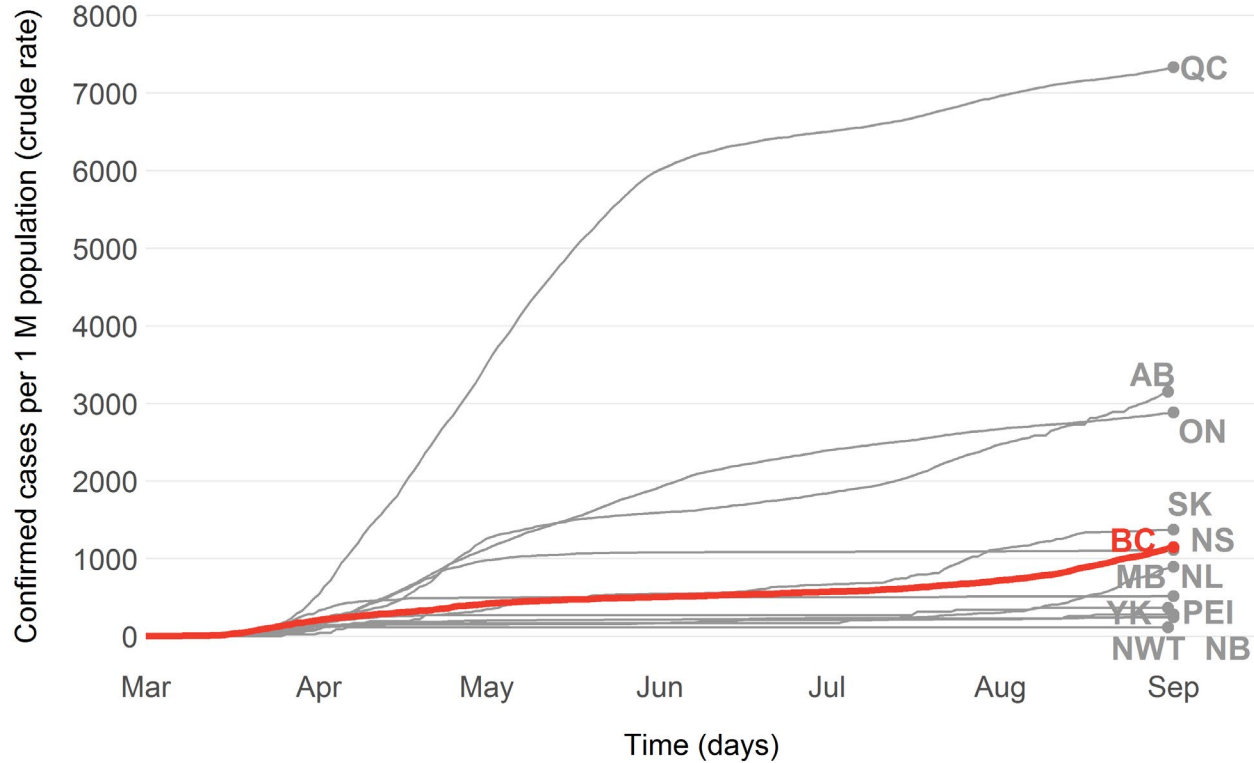
# Total COVID-19 cases in critical care by day, B.C. March 25 - August 27, 2020



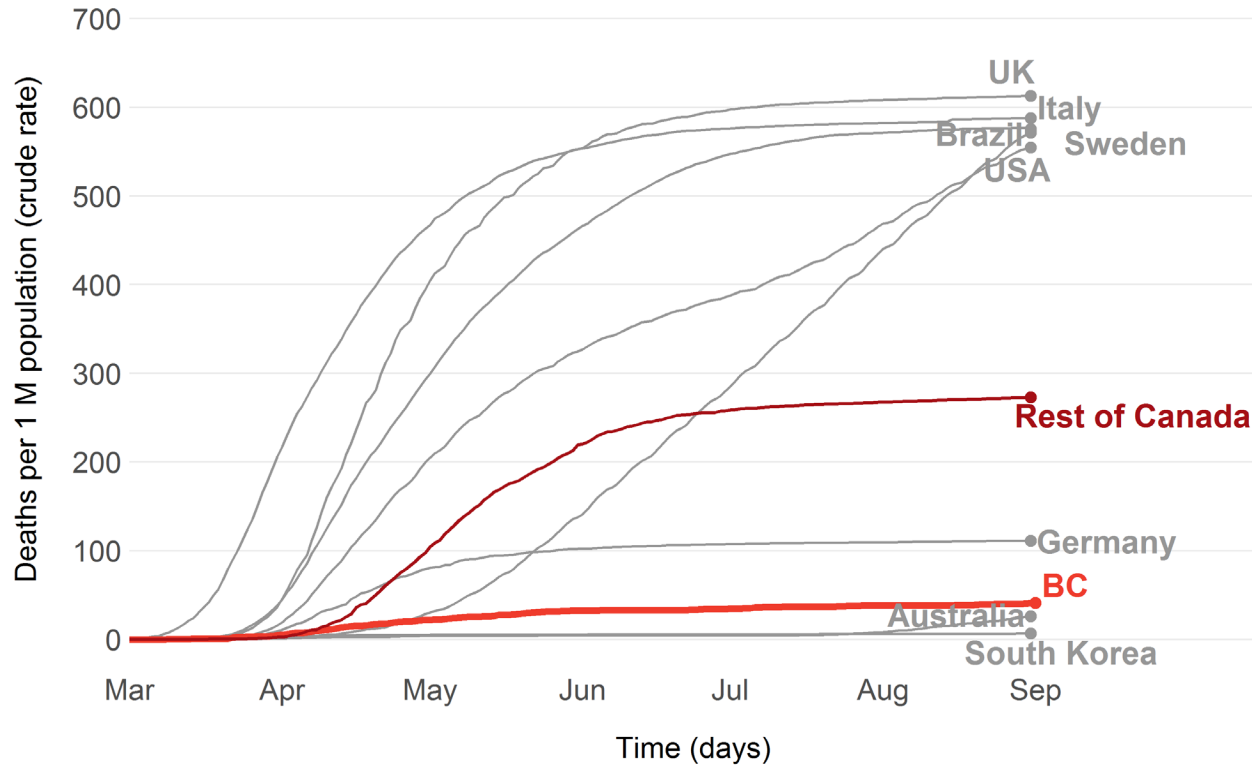
# Cases per 1,000,000 population (International)



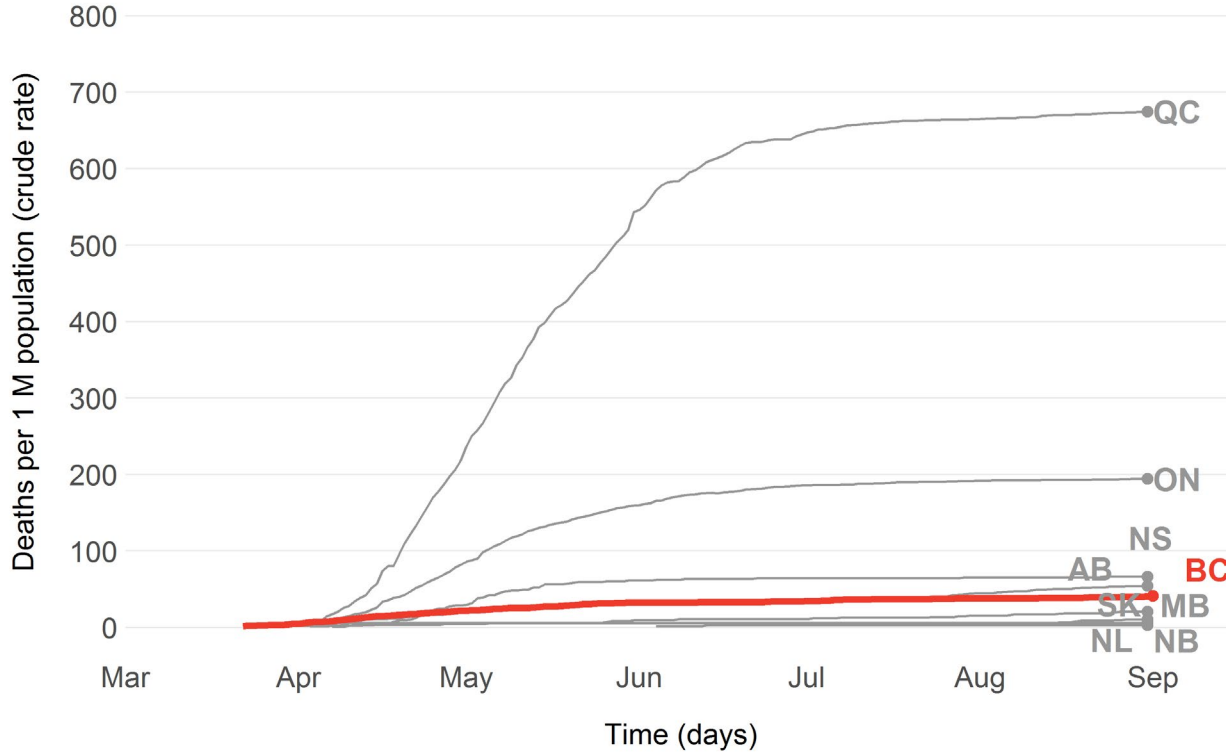
# Cases per 1,000,000 population (National)



# Deaths per 1,000,000 population (International)



# Deaths per 1,000,000 population (National)



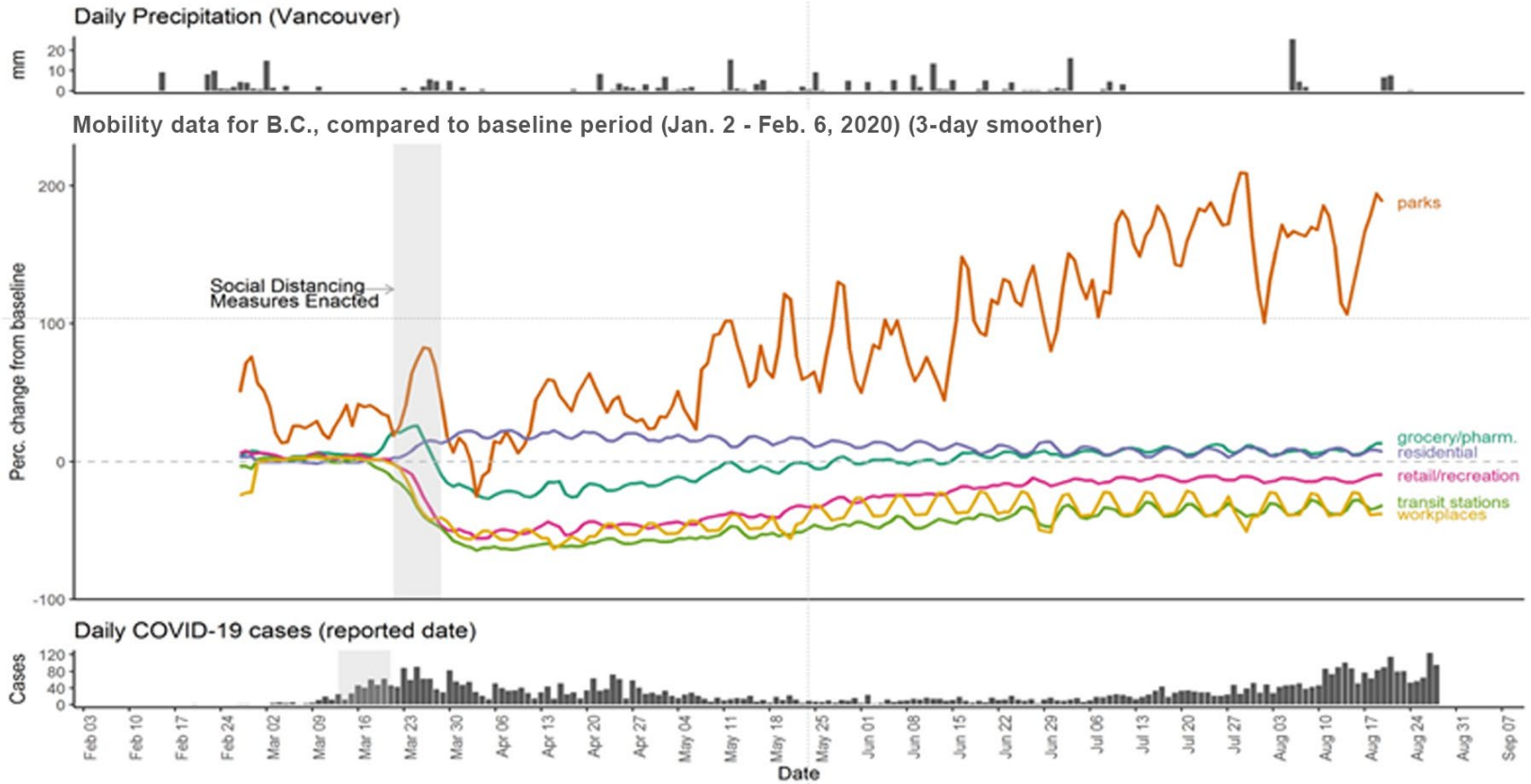


# Weekly Summary of COVID-19 Lab Testing

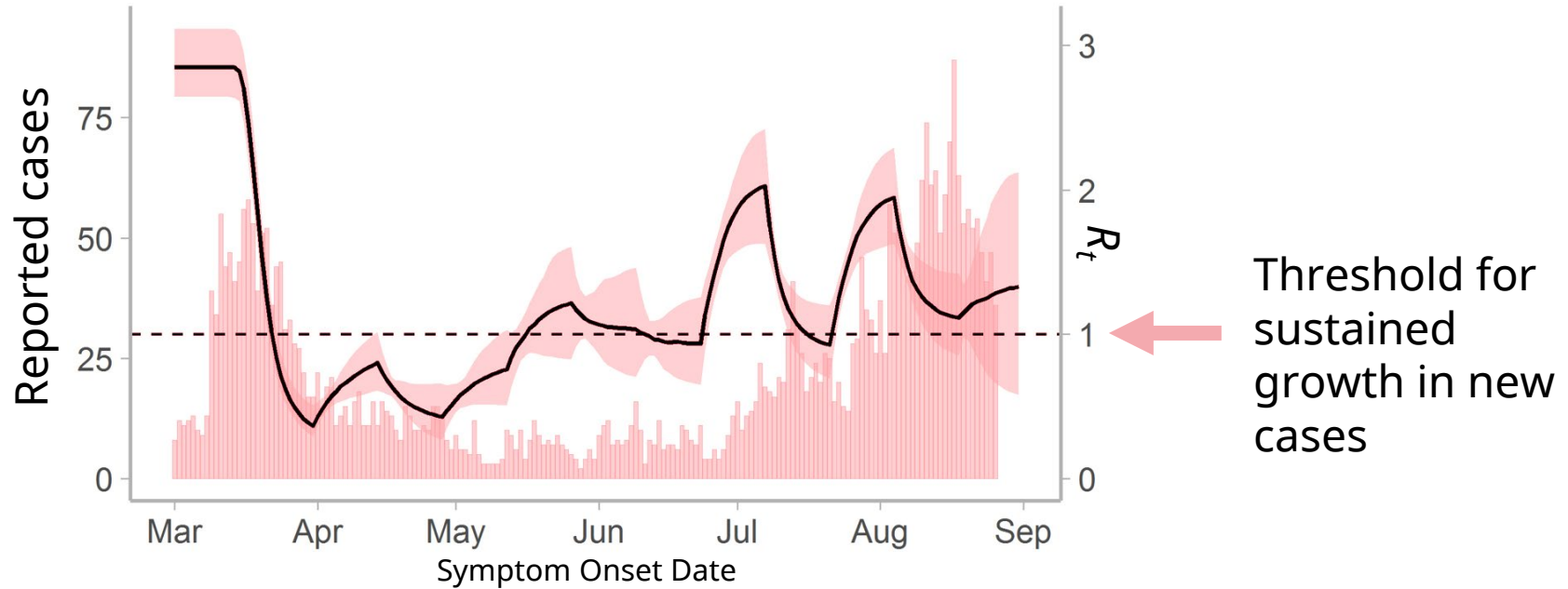


**Data source:** PLOVER extract at 10:45 on Aug 28<sup>th</sup>, 2020.  
Completed Epi week 35 ( Aug 23- 29)

# British Columbians' Mobility



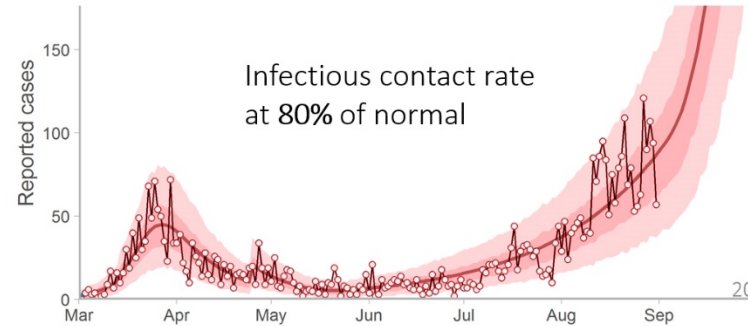
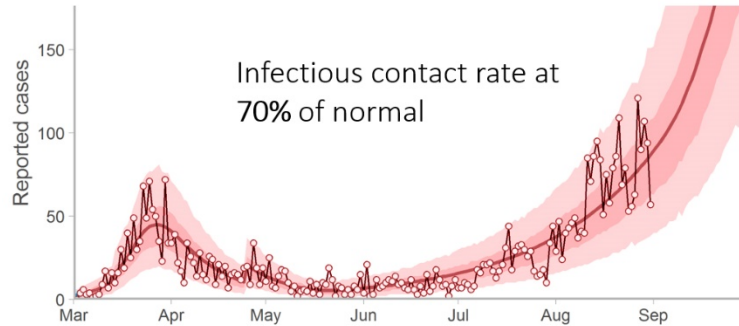
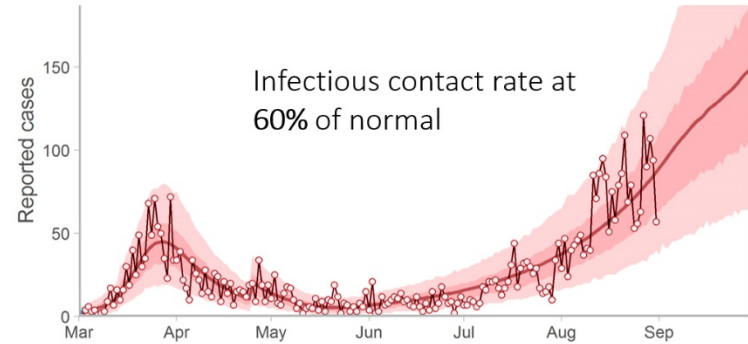
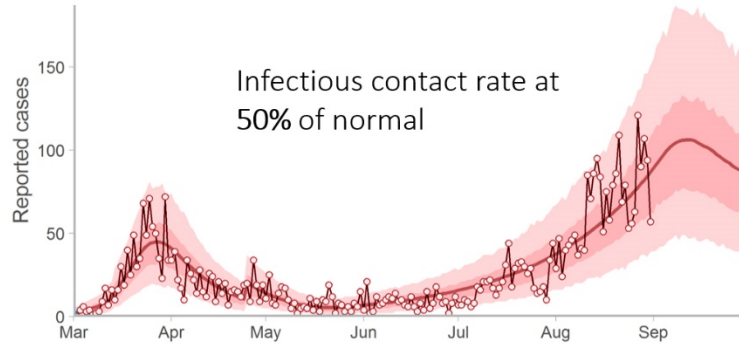
# Dynamic Compartmental Modeling: Recent Trends



Solid black line: median  $R_t$ ; grey band: 95% credible intervals; Purple bars: reported cases, excluding those attributed to facility outbreaks; The most recent case counts and  $R_t$  values are not shown due to lags from transmission to case reporting

# Dynamic Compartmental Modeling: Scenarios

Our model scenarios illustrate that reducing rates of infectious contact can restore epidemic control.



# Dynamic compartmental modeling

1. Since early July, our model estimate of transmission has varied suggesting the infection rate is not stable.
2. Our model illustrates the importance of reducing transmission in order to ensure epidemic control. Transmission is reduced by having fewer infectious contacts, through means such as physical distancing, self-isolation when sick, hand washing and masking when appropriate.

# Commitment to Surgical Renewal

- **May 7**, we released our commitment to surgical renewal in B.C. to recover the lost surgeries and keep up with new demand.
- On **May 18**, we resumed non-urgent scheduled surgeries.
- At the core of our commitment we are focused on patients, increasing surgeries, and increasing essential personnel.

# Commitment to Surgical Renewal

- By July 23, we delivered surgeries to **11,249** patients — **almost 66%** — of the 17,154 patients whose surgery was postponed.
- We performed **904 more surgeries** than in the same timeframe last year.
- Operating room hours **increased by 6%**.
- We performed 7,368 urgent surgeries, a **4% increase** over the same timeframe last year.
- We **doubled** the non-urgent surgeries completed for patients waiting longer than two times their target wait.

# Commitment to Surgical Renewal

- While we have temporarily shifted our priorities from targeting hip, knee and dental surgeries, they have increased over the same timeframe last year: +4% hip, +4% knee and +2% dental surgeries.
- From June 26 to July 23, we recruited seven additional anesthesiologists and general practitioner anesthesiologists.
- We also hired an additional 49 perioperative registered nurses, seven perioperative licensed practical nurses, 13 post-anesthetic recovery registered nurses, and 24 medical device reprocessing technicians.



# COVID-19: Going Forward

- September 3, 2020



Stay Informed Via These Resources:

[gov.bc.ca/Covid-19](https://gov.bc.ca/Covid-19) | [bccdc.ca](https://bccdc.ca) | 1-888-COVID19

Symptom Self-Assessment:

[covid19.thrive.health](https://covid19.thrive.health)



BRITISH  
COLUMBIA